



United States
Department of
Agriculture

Farm Production and
Conservation

Risk
Management
Agency

Topeka Kansas
Regional Office

2641 SW Wanamaker Rd
Suite 201
Topeka, KS
66614-4971

785-228-5512
FAX 785-228-1456

6/4/2020

All Approved Insurance Providers

ATTN: Jaeger Levee (Private)

RE: 2020 NBR: 200575400 (RMA); For the Jaeger Levee (Private) in Pike County, Missouri

Request Type (s):
BL Breached Levee

Due to the 2019 flood event, levees along the Missouri and Mississippi Rivers and tributaries in Missouri were breached. The 2020 Special Provisions allow the Risk Management Agency to adjust the rate for levees temporarily or permanently repaired, but not to prior design specifications.

The Jaeger Levee (private) repairs have been reviewed. Rates calculated are based on the levees temporarily or permanently repaired Level of Protection equal to 30.5 feet at the Clarksville gage. If these offered changes are not acceptable, the insured may submit a request for Actuarial Change. Any request for Actuarial Change must meet all minimum supporting documentation requirements and deadlines found in the 2020 Written Agreement Handbook. A request for actuarial change must also contain supporting documentation as to why the policyholder believes this insurance offer is not acceptable. Failure to provide acceptable supporting documentation may result in non-acceptance of the request.

If you have any questions, please contact this office at 785-228-5512.

Enclosure - Affected Area Map

All Approved Insurance Providers

ATTN: Jaeger Levee (private)

State: Missouri
 County: Pike
 Insured: Jaeger Levee (private)
 WA Number: 200575411

Request Type (s):
 BL Breached Levee

Crop Year(s): 2020

Standard policy terms and conditions for the commodity(s), type(s), practice(s), and insurance plan(s) specified on this written agreement shall be those of Pike County, Missouri, except for the amendments specified in this agreement.

Commodity	Insurance Plan
0041 Corn	01 Yield Protection
	02 Revenue Protection
	03 Revenue Prot with Harvest Price Exclusion
0051 Grain Sorghum	01 Yield Protection
	02 Revenue Protection
	03 Revenue Prot with Harvest Price Exclusion
0081 Soybeans	01 Yield Protection
	02 Revenue Protection
	03 Revenue Prot with Harvest Price Exclusion

Amendments provided by this written agreement will be limited to the commodity(s) and insurance plan(s) listed on this agreement. Application of the amendments is further restricted to the insured listed on this agreement and the land descriptions specified below.

WA Land ID - 1:

A list of FSA Farm, Tract, and Field numbers associated with WA Land ID - 1 is provided in the LandDescription Table of the WA ADM.

Land identified in this written agreement will use the rate adjustment(s) listed in the High Risk / Map Area Rate(s) table to calculate the total rate. The total rate will be further modified depending on the coverage level and options selected for the policy as shown in the actuarial documents. These rates replace any high risk rates or unrated designations shown in the actuarial documents.

High Risk / Map Area Rate(s)			
Sub County: BBB			WA Land ID - 1
	(0041) Corn ALL TYPES	(0051) Grain Sorghum ALL TYPES	(0081) Soybeans ALL TYPES

WA Number: 200575411

	ALL PRACTICES	ALL PRACTICES	ALL PRACTICES
Rate Method	Additive	Additive	Additive
Rate Adjustment	0.2660*	0.2180*	0.1860*

**An asterisk to the right of a value indicates that it is a modification associated with this offer.*

This Written Agreement applies to the 2020 crop year only.

WA Number: 200575411

The undersigned parties agree the above changes will apply to the insured's policy for the crop(s) and insurance plan(s) as identified herein. These changes are an endorsement to the applicable policy materials. This written agreement does not change any terms and conditions of the applicable policy/provisions or actuarial UNLESS specifically stated in this agreement.

USDA RMA APPROVAL

Akilah Johnson
Risk Management Specialist

_____/_____/_____
DATE

RMA approves the use of this Written Agreement. Any modification to the Written Agreement voids RMA approval.

DISTRIBUTION: Original to the Insurance Provider; copy to the agent, insured, and Risk Management Regional Office.

COLLECTION OF INFORMATION AND DATA
(PRIVACY ACT) STATEMENT
Agents, Loss Adjusters, and Policyholders

The following statements are made in accordance with the Privacy Act of 1974 (5 U.S.C. 552a): The Risk Management Agency (RMA) is authorized by the Federal Crop Insurance Act (7 U.S.C. 1501-1524) or other Acts, and the regulations promulgated thereunder, to solicit the information requested on documents established by RMA, or by approved insurance providers (AIPs), that have been approved by the Federal Crop Insurance Corporation (FCIC), to deliver Federal crop insurance. The information is necessary for AIPs and RMA to operate the Federal crop insurance program, determine program eligibility, conduct statistical analysis, and ensure program integrity. Information provided herein may be furnished to other Federal, State, or local agencies, as required or permitted by law, law enforcement agencies, courts or adjudicative bodies, foreign agencies, magistrate, administrative tribunal, AIPs contractors and cooperators, Comprehensive Information Management System (CIMS), congressional offices, or entities under contract with RMA.

For insurance agents, certain information may also be disclosed to the public to assist interested individuals in locating agents in a particular area. Disclosure of the information requested is voluntary. However, failure to correctly report the requested information may result in the rejection of this document by the AIP or RMA in accordance with the Standard Reinsurance Agreement between the AIP and FCIC, Federal regulations, or RMA-approved procedures and the denial of program eligibility or benefits derived therefrom. Also, failure to provide true and correct information may result in civil suit or criminal prosecution and the assessment of penalties or pursuit of other remedies.

Non-Discrimination Statement

The U.S. Department of Agriculture (USDA) prohibits discrimination against its customers, employees, and applicants for employment on the bases of race, color, national origin, age, disability, sex, gender identity, religion, reprisal, and where applicable, political beliefs, marital status, familial or parental status, sexual orientation, or all or part of an individual's income is derived from any public assistance program, or protected genetic information in employment or in any program or activity conducted or funded by the Department. (Not all prohibited bases will apply to all programs and/or employment activities.)

To File a Program Complaint

If you wish to file a Civil Rights program complaint of discrimination, complete the USDA Program Discrimination Complaint Form, found online at http://www.ascr.usda.gov/complaint_filing_cust.html, or at any USDA office, or call (866) 632-9992 to request the form. You may also write a letter containing all of the information requested in the form. Send your completed complaint form or letter by mail to the U.S. Department of Agriculture, Director, Office of Adjudication, 1400 Independence Avenue, S.W., Washington, D.C. 20250-9410, by fax (202) 690-7442 or email at program.intake@usda.gov.

Persons with Disabilities

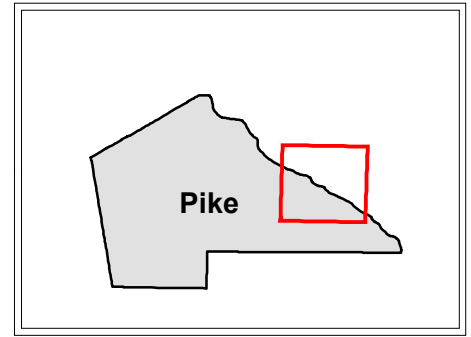
Individuals who are deaf, hard of hearing or have speech disabilities and wish to file either an EEO or program complaint please contact USDA through the Federal Relay Service at (800) 877-8339 or (800) 845-6136 (in Spanish). Persons with disabilities, who wish to file a program complaint, please see information above on how to contact the Department by mail directly or by email. If you require alternative means of communication for program information (e.g., Braille, large print, audiotape, etc.) please contact USDA's TARGET Center at (202) 720-2600 (voice and TDD).

State: Missouri
County: Pike
Insured: Jaeger Levee (private)
WA Number: 200575411

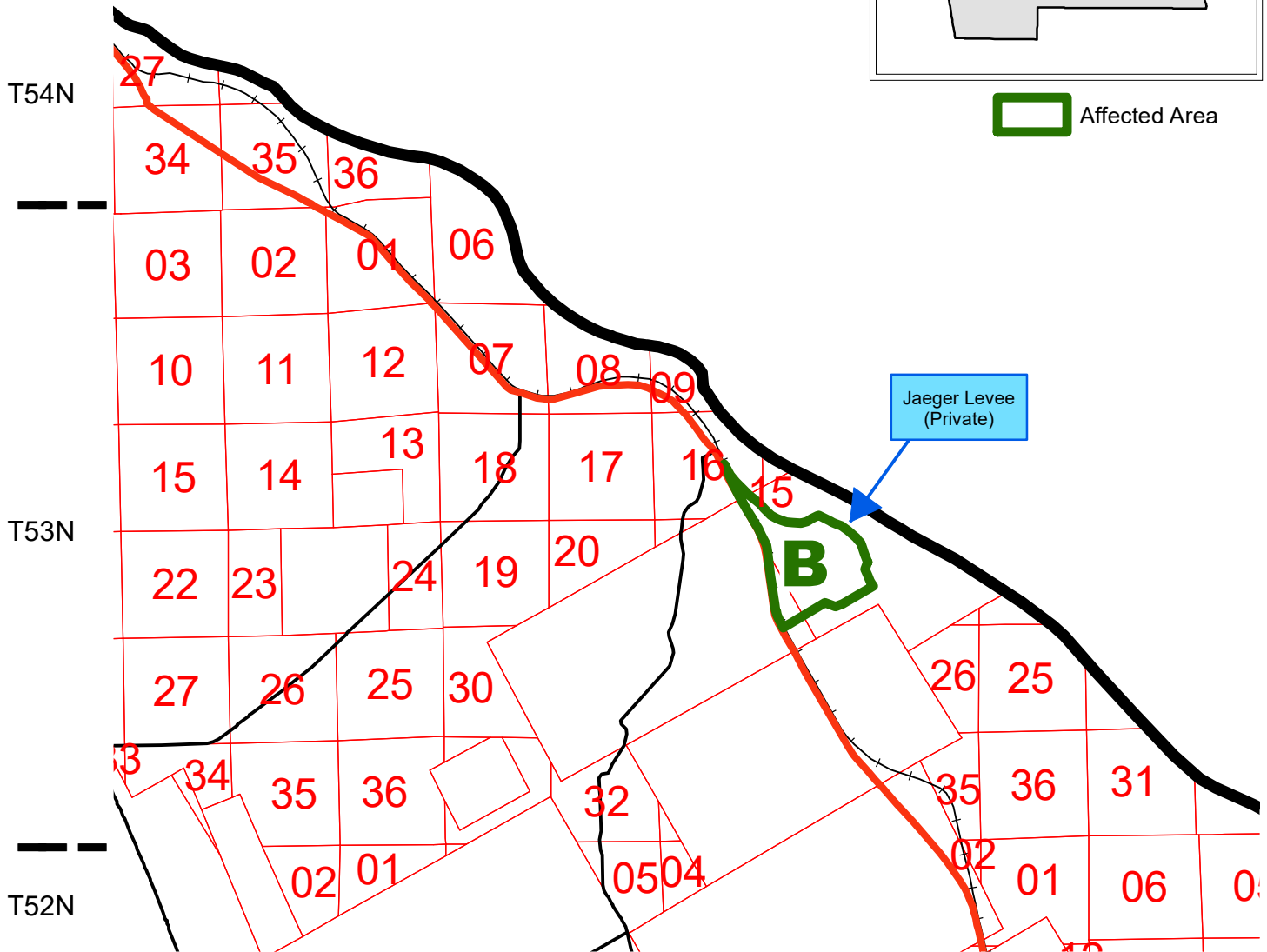
R1W

R1E

R2E



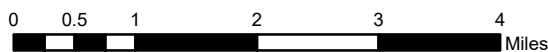
 Affected Area



This map represents land applicable to the BL Breached Levee Written Agreement.

Source: Risk Management Agency

Map Created by: RMA, Topeka Regional Office, Topeka, KS
 Map Creation Date: 6/4/2020 1:35:31 PM
 Map Projection: NAD 1983 UTM Zone 15N
 Projection: Transverse Mercator/North American 1983



The information displayed in this map is intended to serve as an aid in displaying data provided or stored by the Risk Management Agency. It does not modify, replace, or supersede any USDA published policy provisions or procedures.